

P6-23. In Fig. P6 23, switches S_1 and S_2 have been closed for a long time.

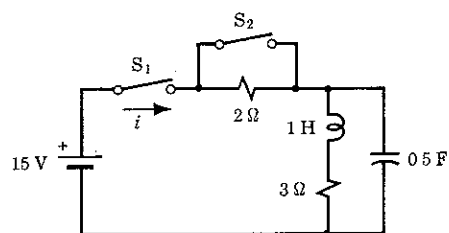


Figure P6 23

- Where in this circuit is energy stored? How much?
- If switch S_2 is opened at $t = 0$, predict i_L , v_C , i , and i_C at $t = 0^+$.
- Derive an expression for $i(t)$ with two undetermined constants.
- Obtain a specific expression for $i(t)$.