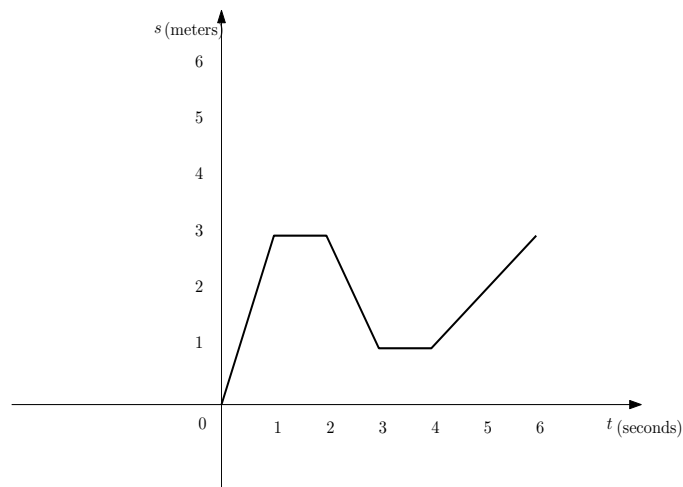


1. A particle starts by moving to the right along a horizontal line; the graph of its position function is shown below



- (a) When is the particle moving to the right?
 - (b) When is the particle moving to the left?
 - (c) When is the particle standing still?
2. The number of bacteria after t hours in a controlled laboratory experiment is $n = f(t)$. What is the meaning of the derivative $f'(5)$?
- 3. P. 82 #2
 - 4. P. 83 #14
 - 5. P. 85 #36
 - 6. P. 90 #6
 - 7. P. 90 #18
 - 8. P. 91 #38
 - 9. P. 91 #46